

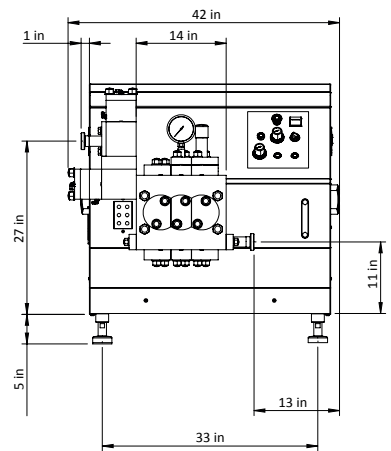
Homogenizer HST - HLE15

- Standard capacity 9 gal/min
- Standard homogenizer pressure 2,901 PSI
- Absorbed motor power: 20 hp
- Aseptic execution is optional
- Sustainable for processing high viscosity products
- Unique design in accordance with the conditions is use simple installation, economic design, and easy maintenance

Weight with motor: Approx. 1,764 lbs
 Technical changes reserved!



Model	Max. Capacity	Max. Pressure
HST-HLE15	GPM	PSI
HLE15-180	10	2,611
HLE15-200	9	2,901
HLE15-300	6	4,351
HLE15-400	4	5,802
HLE15-500	3	7,252
HLE15-750	2	10,878
HLE15-1000	.9	14,504



Model	Max. Speed	Max. Diameter
HST-HLE15	RPM (Speed)	MM (Diameter)
HLE15-180	135	40
HLE15-200	135	35
HLE15-300	126	30
HLE15-400	135	25
HLE15-500	135	20
HLE15-750	100	20
HLE15-1000	100	16

